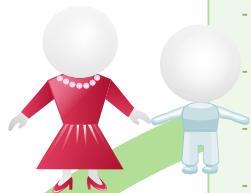


Story Map

Who



Four horizontal dashed lines for writing the names of the characters in the story.

What

A large central circle containing ten horizontal dashed lines for writing the main events of the story.

Why ?

Four horizontal dashed lines for writing the reasons behind the events in the story.

Where



Five horizontal dashed lines for writing the location of the story.

When



Five horizontal dashed lines for writing the time of the story.