

Korea vs Japan

Do U Know their Differences

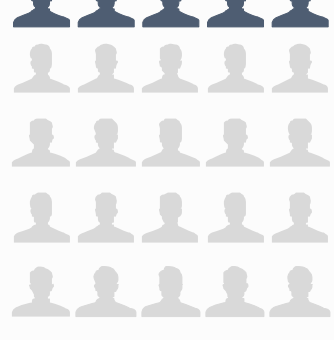
See the key points in terms of culture and social aspects



Korea

Japan

Population & Territory



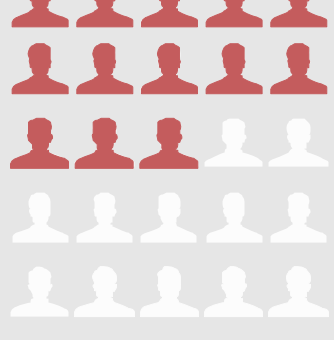
50 millions

Global ranking **27**



100 thousand square kilometers

Population density: 513 population / square kilometers (July 1, 2017)



130 millions

Global ranking **13**

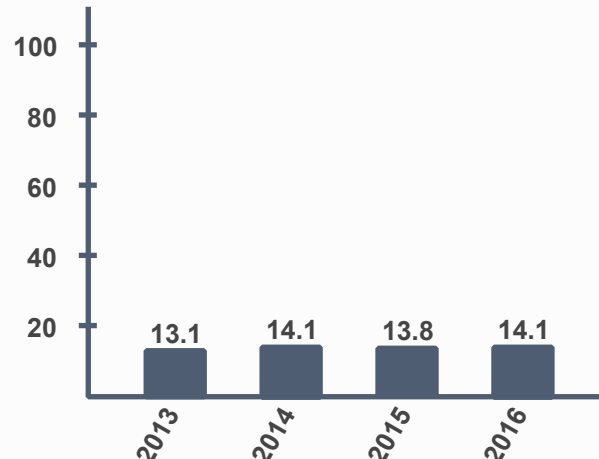


370 thousand square kilometers

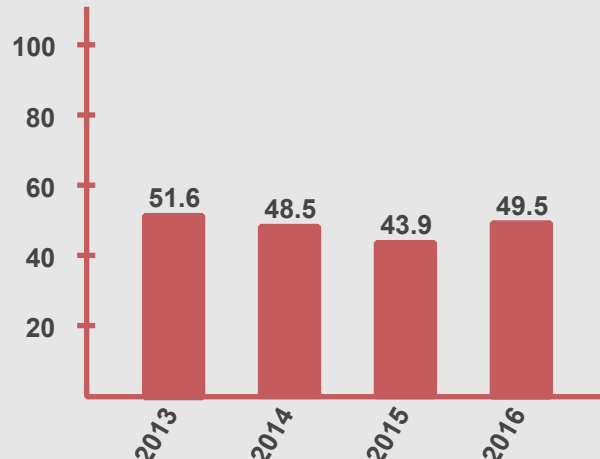
Population density: 335 population / square kilometers (Jan 1, 2018)

GDP

(in hundreds of \$ billions)



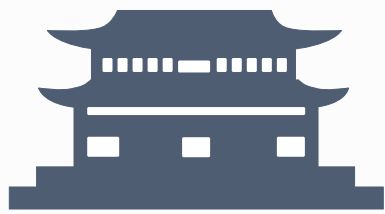
Korean GDP (2013-2016)



Japanese GDP (2013-2016)

Through the comparisons of all aspects of the population, land and GDP, we can see that Japan has more population, larger land area and more advanced economy performance than Korea.

Places of Interests



Gyongbokkung

Gyongbokkung is the last unified dynasty in the history of the Korean Peninsula. It is the imperial palace of the Korean Dynasty. The temple is located in the capital of the DPRK Dynasty, Seoul (now Korea Seoul).



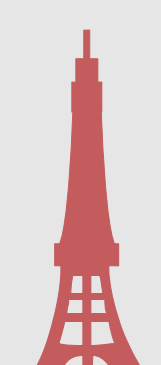
Fuji

Mt Fuji is the highest peak in Japan land area and it is also one of Japanese important national symbols. The active volcanoes acrosses Shizuoka and Yamanashi and are about 80 kilometers southwest to Tokyo.



Seoul Tower

Seoul tower is located in Nanshan, Seoul City, South Korea. It is 236.7 meters high and was built in 1975. It is a famous tourist spot in Korea.



Tokyo Tower

The Tokyo tower is a landmark building in Japan. It is located in the Tokyo Park, Chi Park with a height of 332.6 meters. Tokyo tower is mainly used to transmit various kinds of radio waves, such as television and radio.

The most famous sites in the big cities of South Korea are mainly cultural landscapes and temples. Modern landscapes are mostly commercial streets and cultural squares. Meanwhile, Japan has many well preserved temples and basic facilities, even the grass and wood are carefully cared. The Japances business is fast-developing with many kinds of goods.

Culture

Religion

Korea

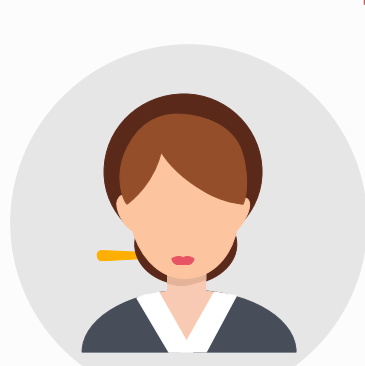
Christian Protestantism, Buddhism, and Catholicism

Religion

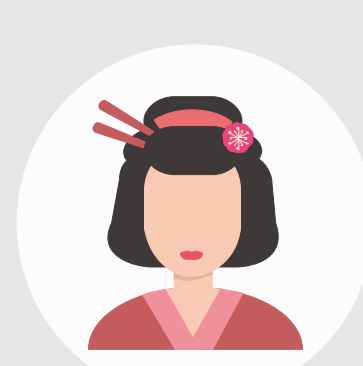
Japan

Taoism and Buddhism

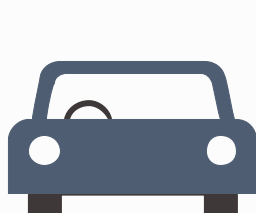
Traditional dress up



Traditional dress up

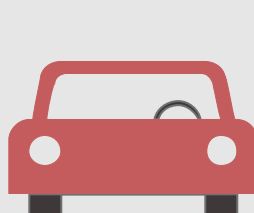


Road



Korea: Drive on the right

Road



Japan: Drive on the left

Through the comparisons of the population, land, economy and culture of Korea and Japan, we can conclude that Japan has larger population and land area with an ever advanced economy. On the other hand, both of these two countries have their own famous scenic spots and culture style.