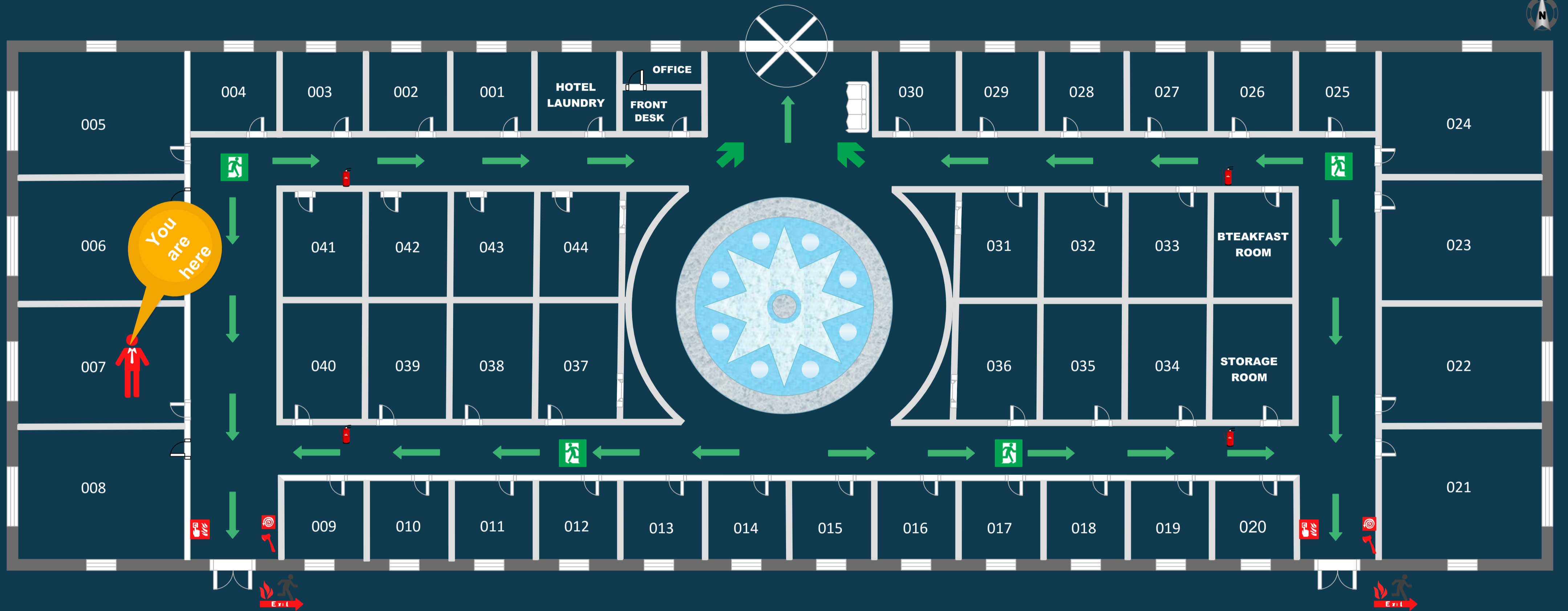


EVACUATION DIAGRAM

100 YOUR BUSINESS STREET, SUBURB, STATE, POSTCODE

(800) 555-0550
www.edrawsoft.com



Company Name

Lorem ipsum dolor sit amet, consectetur adipiscing elit.

EMERGENCY INFORMATION

- R** - REMOVE people from immediate danger.
- A** - ALERT others and emergency services.
- C** - CLOSE windows and doors, contain the spread of fire.
- E** - EVACUATE the premises.

EMERGENCY INFORMATION

- P** - PULL the pin from the extinguisher and test.
- A** - AIM the nozzle at the base of the fire.
- S** - SQUEEZE the operating handle to release the extinguishing agent.
- S** - SWEEP from side to side.

LEGEND



Arrow



Emergency Exit



Emergency Exit



Fire Hose



Fire Axe



You are Here



Fire Extinguisher