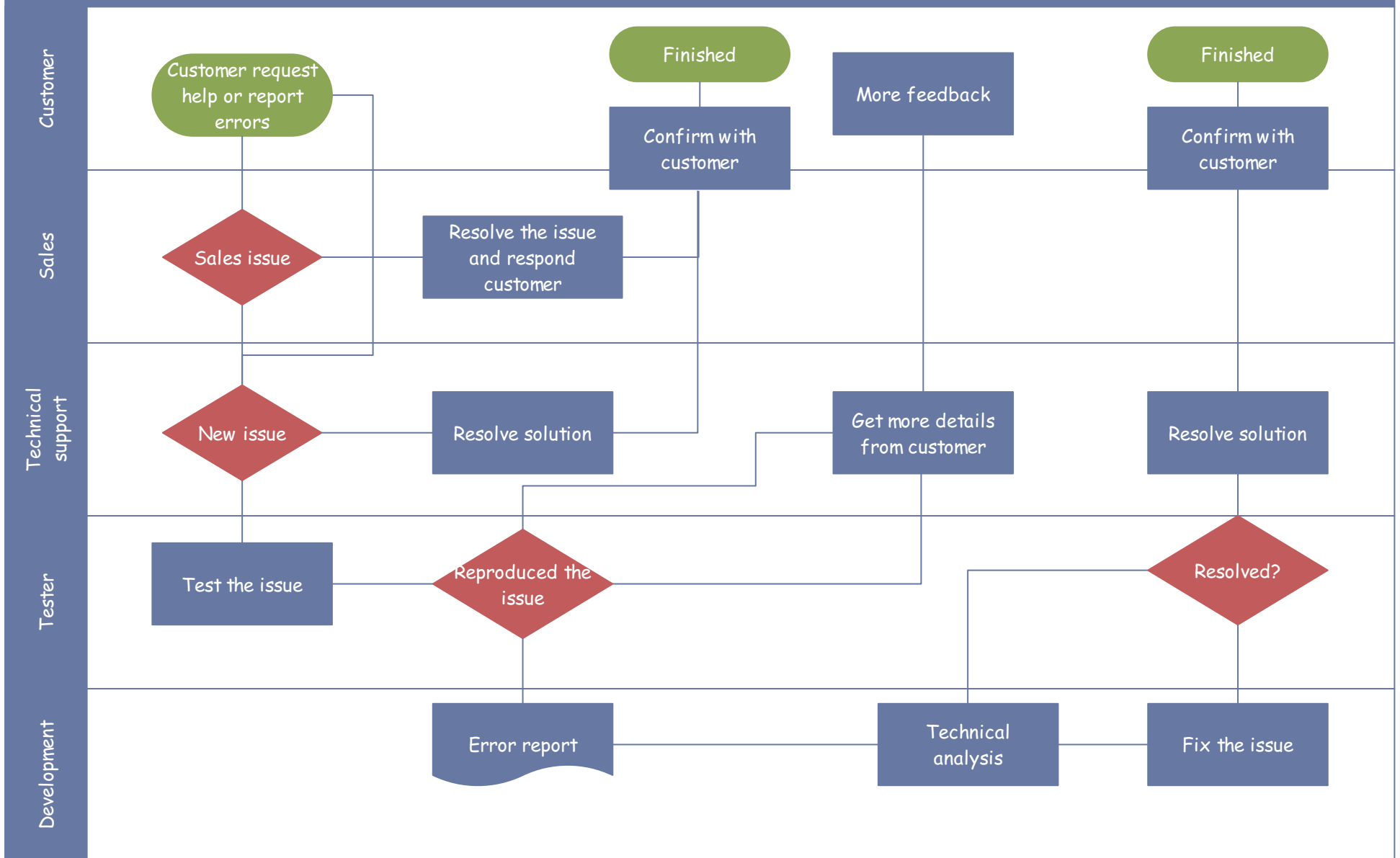


Software Service Cross-Functional Process



In a grid-like figure arranged into parts, a **cross-functional flowchart** explains who does what and when. It shows the relationships between functions (such as a stakeholder or department) and phases (such as milestones) in a process, going beyond a simple flowchart.

Cross-functional flowcharts are very useful when you want to diagram a process and make it clear who is responsible for each step. With **EdrawMax**, this templates can be easily customized, just download and add pre-set shapes, connect shapes with smart connectors, add own texts, adjust the layout, and change color and line styles.